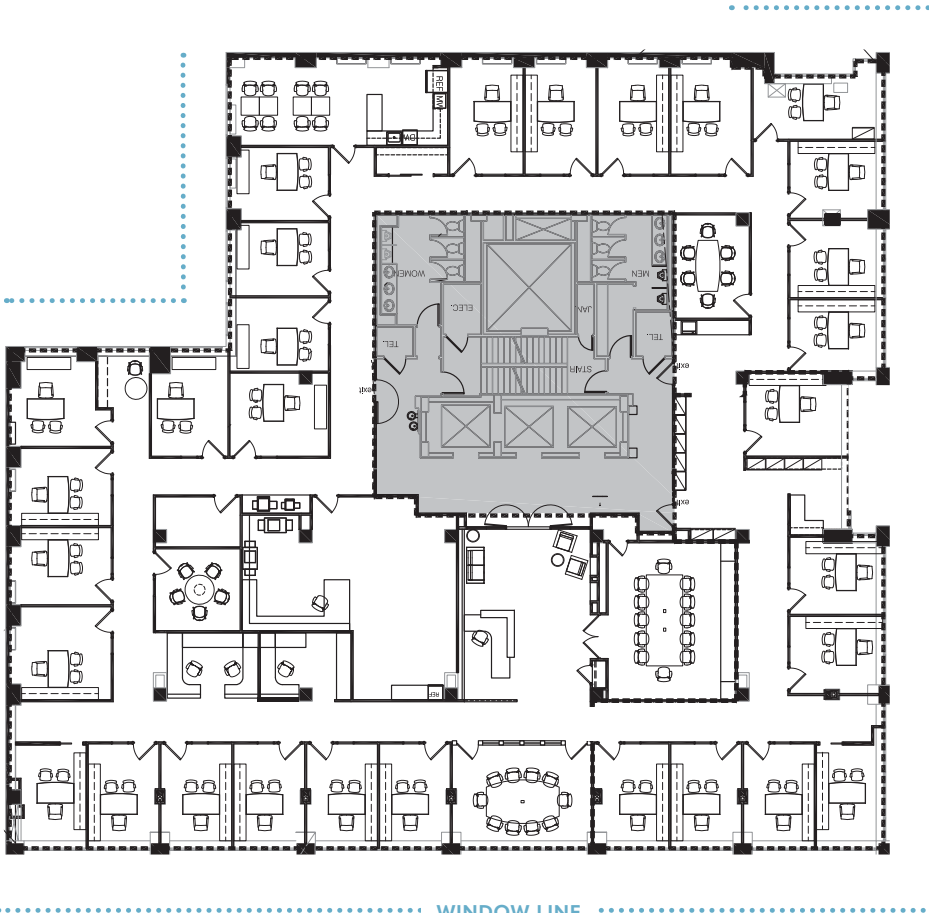


SUITE 200

12,421 SF
PLUG-AND-PLAY



WINDOW LINE

19TH STREET

L STREET

- Full elevator-lobby reception presence
- 2 conference rooms (12 person & 10 person)
- 2 huddle rooms (6 person & 5 person)
- 30 private offices (22 windowed)
- 4 workstations
- Eat-in pantry
- Large work room with storage
- Ample file storage
- Dedicated IT room with server rack

